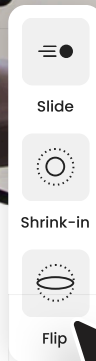


 Certified Partner

Digital Signage Platform

Powered by AT&T's Nationwide 5G Network

Create, manage, and display your own animated content for one or multiple players in just a few clicks — all connected through AT&T's fast, secure 5G wireless network for maximum uptime and performance.



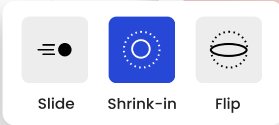
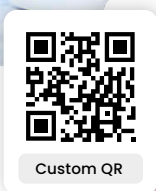
**Pay NO Gap
Teeth Whit**
For patients on Me
and AHM insurance



(617) 618-6006 Sales@For2Fi.com

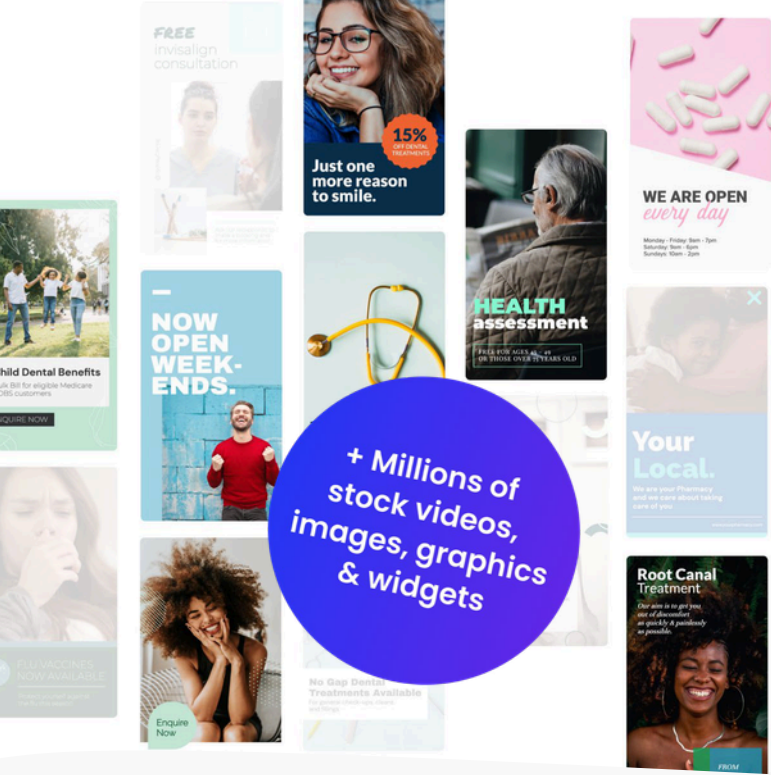
Easily create & manage beautiful digital signage

Mandoe makes it easy to create beautiful digital signage and show it in your store



All with our Content Studio

It has never been easier to create professional-level video content with the studio. With template automation, you can make custom content for any business in seconds – and publish it instantly over AT&T's dependable wireless network.



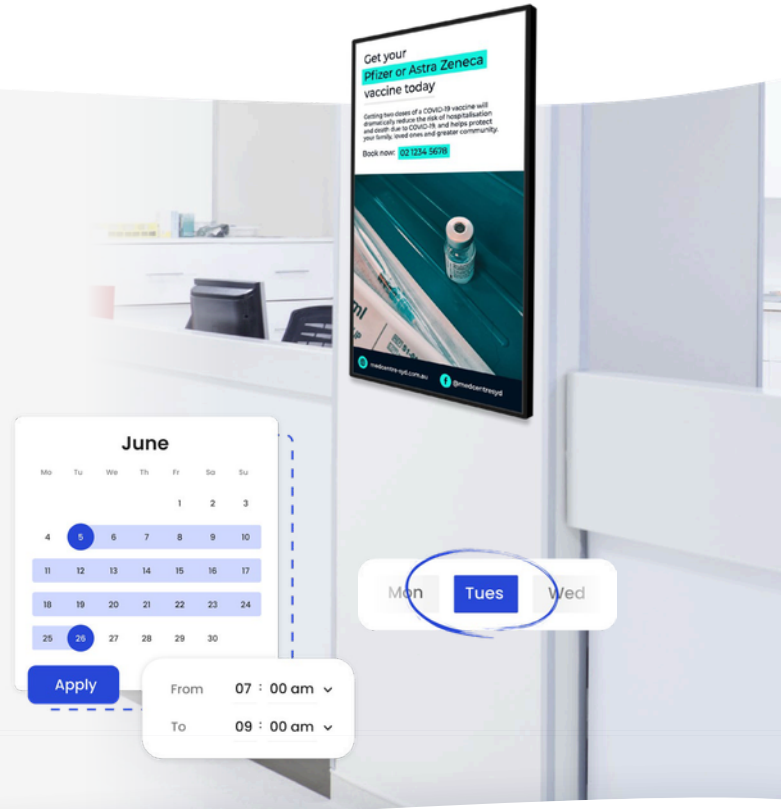
Create beautiful, impactful signage

Mandoe's drag and drop signage builder makes it easy for anyone to create beautiful, impactful signage. Personalize your signage by adding your own text and images or choosing from our library of thousands of stock images, icons, graphics + more. Your content updates are delivered seamlessly through AT&T's nationwide 5G network, ensuring every screen stays current.

Advanced Scheduling

The advanced scheduling tool allows for complete control over when and where your content plays. Paired with AT&T's reliable wireless coverage, your schedules publish on time — even across multiple locations, clinics, or pharmacies.

- Date Range
- Time of Day
- Day of the week
- Months



Intuitive + Flexible Management

Using the powerful tagging system, you can group displays and control scheduling of specific content for specific displays. For2Fi ensures every device stays connected through AT&T's secure, enterprise-grade wireless network, giving you full visibility and control.

- Full control of displays & Tags
- Screens, Locations, Category tags.
- Create hierarchy with nested tags.